



Float Switch Range

Contents

Float Switches	2
----------------------	---

Float Switches are available in the following styles:

- As single switches for 'High' fuel level indication as shown above, working in conjunction with the FEL Valves range of Tank Overfill Alarms whereby an audible and visual alarm is generated by detection of a high fuel level within a tank using a standard make on rise float switch assembly. Also shown above is a 'Bund' float switch with flexible lead (20270/F).
- Twin float switches, can provide 'High' and 'Low' switch points for indirect pump start/pump stop applications or to provide pre-set alarm indications, perhaps for overfilling and fuel reorder points.
- Four float assemblies usually provide a combination of alarm and pump start/pump stop functions, whereby the lower and upper floats give Low Low and High High indication.



Customers may choose between '**Make on Rise**' or '**Make on Fall**' switch orientation, together with the switch point dimensions taken from the top of the tank into which the float switches are to be installed.

FEL Float switches are manufactured to a robust design, using stainless steel stem, floats and float stops and a brass process connector with 1" BSPP male thread. The terminal housing is of cast aluminium to IP67, whilst the internal switches have a standard rating of 1.0amp 230V ac.

Customers should also specify where float switches are to be used on inductive loads, as back EMF protection may be required.

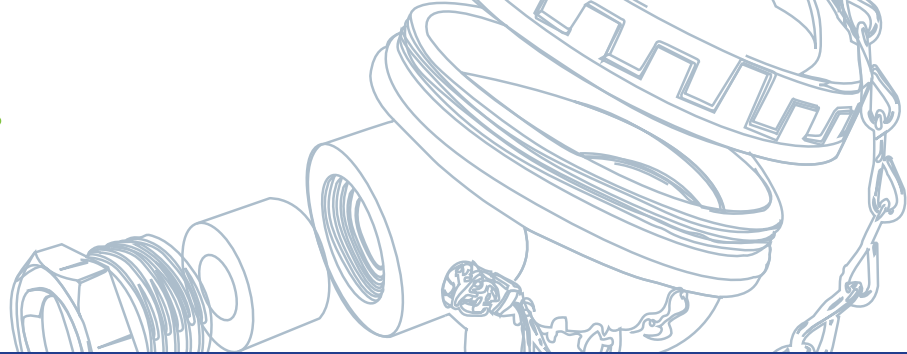
All FEL float switches are made to suit individual customer requirements for switch rating, orientation, switch depth and materials of construction.

Float Switch – Part Numbers				
Float Switch Lengths (mm)	Number of Floats 1	Number of Floats 2	Number of Floats 3	Number of Floats 4
(0 - 550mm)	20-271	20-271/2	20-271/3	20-271/4
(551mm - 1020mm)	20-271A	20-271/2A	20-271/3A	20-271/4A
(1021mm - 1550mm)	20-271B	20-271/2B	20-271/3B	20-271/4B
(1551mm - 2000mm)	20-271C	20-271/2C	20-271/3C	20-271/4C
(2001mm - 2500mm)	20-271D	20-271/2D	20-271/3D	20-271/4D
(2501mm - 3000mm)	20-271E	20-271/2E	20-271/3E	20-271/4E
(3001mm - 3500mm)	20-271F	20-271/2F	20-271/3F	20-271/4F
(3501mm +)	20-271G	20-271/2G	20-271/3G	20-271/4G



FEL Valves

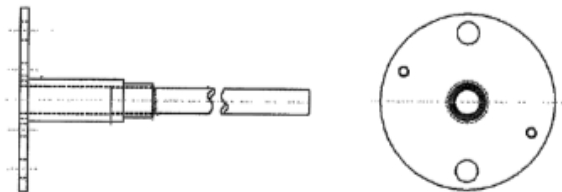
www.felvalves.com



EXD EXPLOSION PROOF TERMINAL HEAD

XD Type

Supplied with bush and flame path collar.



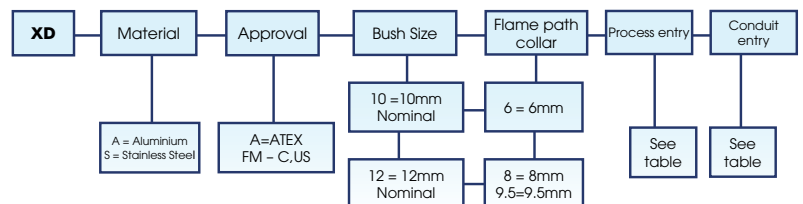
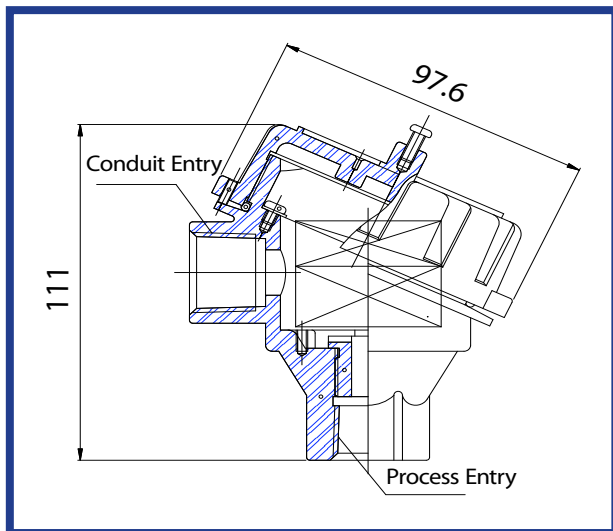
EN60079-1



XDS - Stainless Steel



XDA - Aluminium
Epoxy paint RAL5005



Eg. XDS-F-12-9.5-M24-M20

XD head - Stainless Steel, F = FM - C, US approved, 12mm nominal bush, 9.5mm flame path collar, M24 process entry x M20 conduit entry.

Process Entry	Code	Conduit Entry	Code
M20 x 1.5	M20	M20 x 1.5	M20
M24 x 1.5	M24	M24 x 1.5	M24
M25 x 1.5	M25	M25 x 1.5	M25
1/2" NPT	12NPT	1/2" NPT	12NPT
1/2" BSPP	12BSP	1/2" BSPP	12BSP
1/2" BSPT	12BST	1/2" BSPT	12BST
3/4" NPT	34NPT	3/4" NPT	34NPT
3/4" BSPP	34BSP	3/4" BSPP	34BSP
3/4" BSPT	34BST	3/4" BSPT	34BST
1" NPT	1NPT	PG16	PG16
1" BSPP	1BSP		
1" BSPT	1BST		

Float Switch Questionnaire / Specification — Please complete appropriately.

Customer Details	
Customer	
Contact Name	
Part Number FEL Valves Use	
Enquiry Date (dd/mm/yyyy)	

Process Connection Size	
1" - Standard	
1 ½"	
2"	

Process Connection	
BSPP - Standard	
NPT	
Flanged EN1092-1 (PN16)	
Flanged ANSI 150	

Process Connection Material	
Brass - Standard	
Stainless Steel	

Float Material	
NBR - Standard	
Stainless Steel	

Terminal Enclosure Material	
Aluminium IP67 x M20 - Standard	
Aluminium Eexd x M20	
Stainless Eexd x M20	

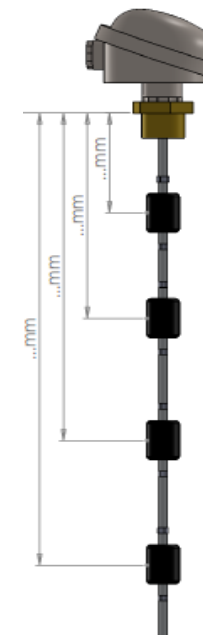
Electrical	
Voltage (V)	V
AC	DC
Switched Current (Amps)	
1	A
Power (Volt-ampere)	
Allow for inrush current	
VA	

Fluid/Liquid Medium	
Name	
Density (SG)	
Temperature (°C)	
Comments	

Float Switch Operation – Customer Bespoke Design			
Switch	Switch Depth (mm)	Make on Rise	Make on Fall
1			
2			
3			
4			
Max Depth (mm)			
Tank Depth (mm)			

Important Information Please be advised that we will do our best to be as accurate as possible on each of the switches. It's important to be advised that the switch depth might have a variance of **5mm +/-**

Important Information
First Float **minimum 65mm**
40mm minimum **between** floats
Add **35mm** **after** last float.



Testing/Certificates *Only on request	
Electrical Continuity Test	
Product Certificate	
Quality Certificates	
Function Test Certificate	

FEL Valves USE ONLY	
Manufacturing Date	
FEL Sales Order No	